

# TH44 Omni

## GENERAL CHARACTERISTICS

**Wet / White Wet Inlay dimensions:** 46 x 46 mm

**—Antenna dimensions: 44 x 44 mm**

**Standard pitch:** 52.92 mm

**Operating frequency:** Global (860 - 960 MHz)

**Chip:** IMPINJ Monza 4D/E/QT

**EPC Memory:** 128/496/128 bits

**USER Memory:** 32/128/512 bits

**TID Memory:** 96 bits, preencoded for multivendor chip (MCS) based serialization, factory programmed

**Inlay substrate material:** PET

**Inlay-to-liner adhesive:** SH3020 (Arconvert)

**Liner material:** CC62 (Arconvert)

**Total thickness over chip:** 187 microns

**Standard web width:** 52 mm

**Unwind direction:** Label side out

**RF Protocol:** ISO-18006-C, EPC Class 1, Gen 2

**RoHS:** EU Directive 2011/65 EU Compliant

**Quality assurance:** 100% read tested with out-of-tolerance inlay marked

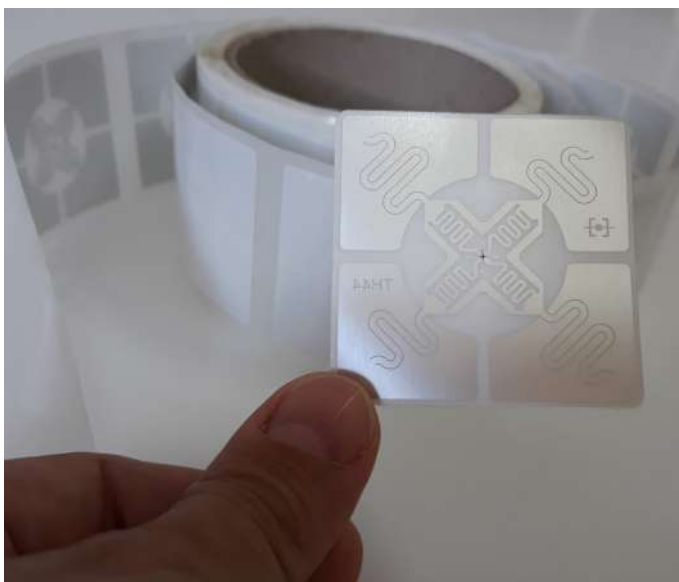
**Operating temperature:** -40°C to 85°C

## COMMON APPLICATIONS

*Apparel and other retail item-level. Supply chain, inventory and logistics. Library, media, documents and files.*

*Minimum order quantity: 10,000 pcs. Average of units per roll: TBD*

The TH44 Omni is an RFID tag perfect for **supply chain, inventory and logistics RFID solutions**. And it's also a **good choice for apparel and other retail item-level RFID deployments**. Finally, we recommend it for **libraries, media, documents and files**.



*CARE AND HANDLING RFID inlays are sensitive to ESD. Observe standard practices to keep environmental static charge to a minimum. APPLICATIONS This product should be tested by the customer/user thoroughly under end use conditions to ensure the product meets the requirements. Trace-ID does not represent that this product is fit for any purpose or use. PRODUCT CHANGES Trace-ID reserves the right to modify, change, supplement or discontinue product offerings at any time without notice. © 2018 Trace-tech Id Solutions S.L. All rights reserved.*

